

Office Address

84-786 Ala Mahiku St

Waianae, HI 96792

Phone 808-695-9566

Fax 808-695-7217



NEWSLETTER

WINTER 2018

MVP Office Hours

Mon, Thurs, Fri 8am - 5pm

Tues and Wed 8am - 6pm

Closed on Sat and Sun

mvpadmin001@hawaii.rr.com

ANNUAL OWNER'S MEETING

Our annual AOA owner's meeting is scheduled for Saturday, March 24, 2018, at the Waianae Comprehensive Health Center Dining Pavilion (86-260 Farrington Hwy, Waianae). Registration will be at 9 am, call to order at 9:30.



If you do not plan on attending the meeting, PLEASE remember to send in your proxy; if you have not received your proxy form, please contact the MVP front office at 808-695-9566, or you may contact Izzy Bracic of Touchstone Properties at izzy@touchstoneproperties-hawaii.com or call 808-566-4100. The majority of owners must be represented; if we do not meet the quorum requirements, the meeting will

have to be cancelled and rescheduled at a cost to all the owners.

Proxies must be returned to Touchstone Properties no later than 4:30pm on Thursday, March 22. You can fax the proxies to (808)-566-4110 or bring them to Jolynn at the MVP front office.

WASHING MACHINE REPLACEMENT

The WEB Laundry Company will begin replacing our old washing machines with new ones, starting in late March. The replacement procedure will continue for a few weeks, until complete in all wash houses. The new machines will have a price increase from \$1.50 to \$1.75.



AIR RAID ALERTS: BE PREPARED

Our recent erroneous missile alert reminds us that we need to be ready in case we hear the air raid sirens. Being located AWAY from Pearl Harbor (the most likely target), we will be cut off from the rest of the island, but it doesn't make sense to drive TOWARD that area.

Download an emergency notification app such as Nixle Alerts on your smartphone. For more info, check our Honolulu county Nixle website:

<https://local.nixle.com/city/hi/honolulu/>

**Are
You?
Ready**

A Disaster Preparedness plan and a Basic Emergency Supply Kit are recommended. Discuss with your family where to meet if you are separated during a disaster (remember, phones may not be working). Recommended items to include in a Basic Emergency Supply Kit:

- * Dust mask (or an Xcaper mask), to help filter contaminated air
- * plastic sheeting and duct tape to secure in place around windows and doors.
- * Water, 1 gallon per person per day for 14 days.
- * Food, at least 14-day supply of non-perishables.
- * Portable propane or gas stove.
- * Battery powered or hand crank radio and a NOAA Weather Radio with tone alert and extra batteries for both.
- * Flashlight and extra batteries.
- * First Aid Kit.

- * Whistle to signal for help.
- * Moist towelettes, garbage bags and plastic ties for personal sanitation.
- * Can opener for food (if kit contains canned food).
- * Fill your tub with water for flushing purposes.
- * Prescription medications and glasses.
- * Infant formula and diapers.

See 808ne.ws/supkit and 808ne.ws/cdedis for additional information about supplies that you may want to add to your Emergency Supply Kit, that will help take care of your family needs.

The **Xcaper Emergency Smoke Mask** is a wearable smoke filter designed for personal home use. While it will not safeguard you from nuclear fallout, it may help filter out dust, smoke and other airborne contaminants better than a regular construction-type dust mask. This reasonably priced mask is available on Oahu from Innovative Items, LLC. For more information call 808-778-8779.



MEET THE STAFF



Jolynn Mehrtens-Cabral
Administrative Specialist

Jolynn started with MVP 13 years ago as an admin assistant in the front office. Seven years ago, she was promoted to Administrative Specialist.

Her duties include computer tech, the website, bar codes, registrations, and orientation for residents and their guests, as well as human resources for all the employees.

Jolynn used to live in the Plantations when she was in 4th grade, and thinks MVP is a nice community. She likes her job here because she likes the people she works with, it's close to home, and she enjoys meeting new people.

If you need any type of office assistance, Jolynn can be contacted during office hours at **808-695-9566** or by email at **mvpadmin001@hawaii.rr.com**

COOL BY THE POOLS!



The past few weeks have been busy ones at the pools! We have purchased new outdoor furniture and umbrellas to lounge at poolside. The tiling in the Ala Mahiku kiddie pool has also been completed, and it looks great - ready to splash into summer!



FRIENDLY REMINDER

“Feeding any and all animals in common areas and/or tampering with animal traps is not allowed.” (House Rule: Sec D, #9)

“Feeding any and all animals in common areas” shall result in a \$50 fine (House Rule: Sec N, #1a). All fines subsequent to the original occurrence may be doubled. (House Rule: Sec N)

Feeding wild or feral animals can be unhealthy for them by altering their natural diet. It also attracts roosters and possibly aggressive or diseased feral animals, resulting in more trapping and removal costs.

WE’VE GOT YOUR MAIL COVERED

Next time you check the mail, you’ll see some nice upgrades. Community bulletin boards have been added (go to the front office to submit your board posts). The roofing over the mailboxes in both mail areas has been completed, protecting our mail from inclement weather. Mahalo to the maintenance staff for this great job...and for making the mail delivery person a whole lot happier!



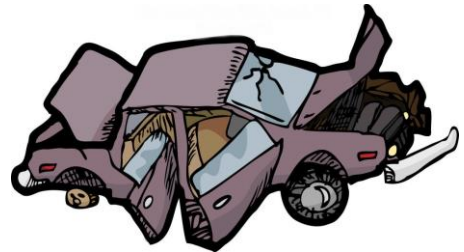
ABANDONED CARS and TRASH

Tired of seeing abandoned cars and illegal dumping on Kili Drive and surrounding neighborhood? It only takes a few minutes to report it! PLEASE HELP!

Abandoned Auto Hotline: 808-768-2530

Abandoned Vehicle Reports online:

<http://www11.honolulu.gov/csdavcomplaints/>



Report Rubbish Dumping:

illegaldumping@honolulu.gov

We have had the most success with municipal cleanup when multiple reports are made about the same car in a short period of time. Be sure to take a picture of the car with your phone, and get the make and model if you can.

It also helps to call and email our local representatives. Be sure to tell them you are a property owner, and that you vote!

Kimberly Pine: 808-768-5025

Kmpine@honolulu.gov

Maile Shimabukuro: 808-586-7793

senshimabukuro@capitol.hawaii.gov

Cedric Gates: 808-586-8460

repgates@capitol.hawaii.gov

USEFUL LINKS

Makaha Valley Plantation Website:

makahavalleyplantation.org/index.html

MVP Security: 808-695-9464

Sec chief: Chris Hodges mvpsecurity@hawaii.rr.com